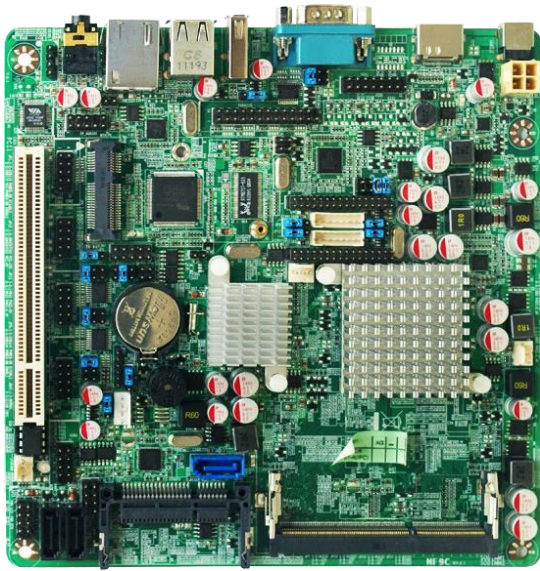


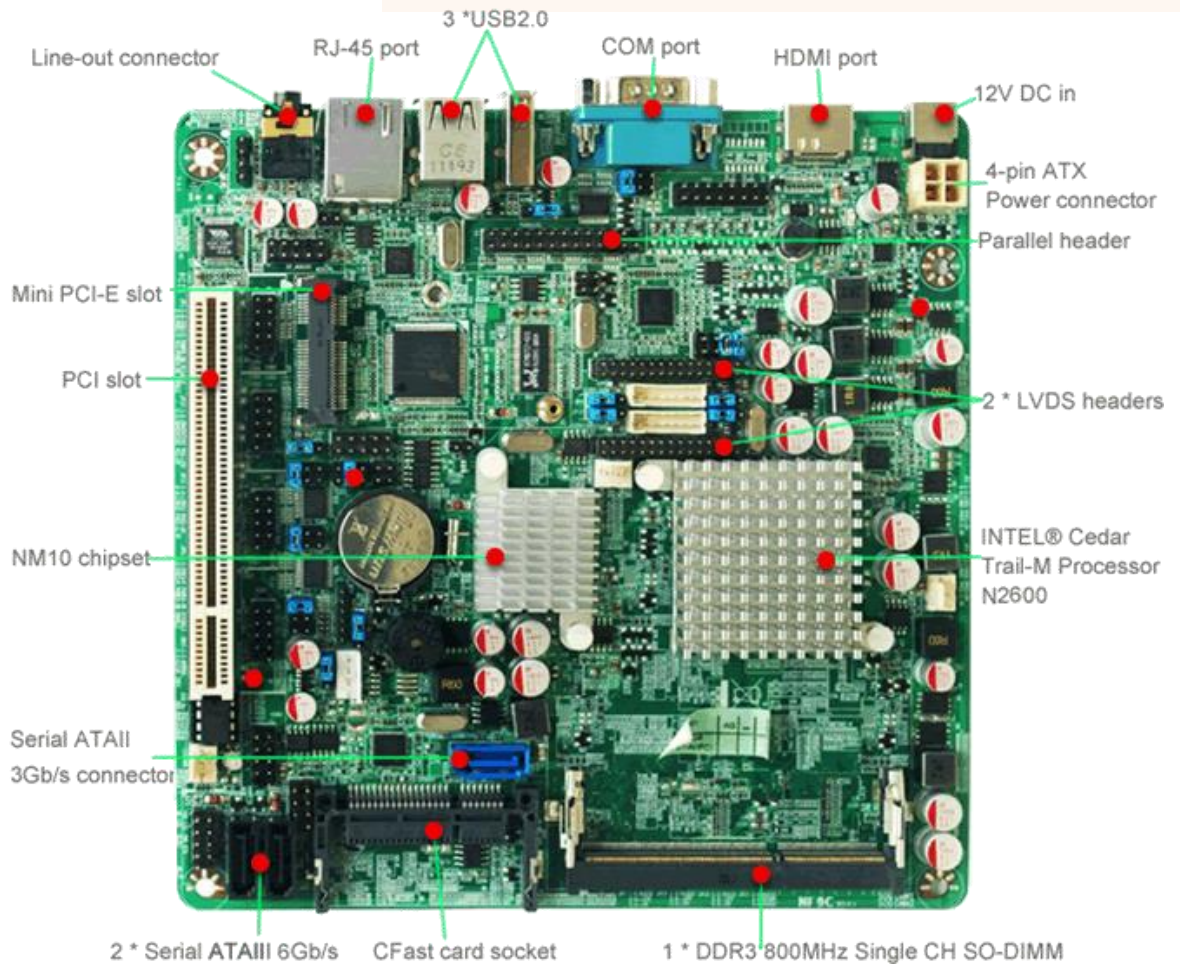
NF9C Series

Intel Atom N2600 / N2800 Thin Mini-ITX
HDMI / 2 LVDS / Gigabit LAN / 4COM / 7USB



Features

1. Embedded Long-life Series Available Through Q4'2016
2. Ultra Low-Profile Form Factor, Less than 2cm Height
3. Fanless Intel Cedar Trail-M Platform
4. Intel Atom N2600 / N2800 Processor, Dual-Core
5. Integrated HD Graphics
6. Supports 2 * SATA3 6Gb/s & 1 * SATA2 3Gb/s Devices
7. 1 * CFast Embedded Storage Socket, 4 * Serial Ports
8. Gigabit LAN with Enhanced Surge Protection
9. HDMI and 24-bit Dual Channel LVDS
10. 12V DC or Internal 4-pin ATX Power



www.ibtpanelpc.com

eMail: info@ibtpanelpc.com **iBT Technologies inc.**
Toll Free: 1(866) 590-4288 Tel. (514) 832-0808 Fax. (514) 832-0128

Specifications

CPU*	<ul style="list-style-type: none"> ■ Intel Atom N2600 Processor, 1.6GHz, Dual-Core, 32nm, 3.5W ■ Intel Atom N2800 Processor, 1.86GHz, Dual-Core, 32nm, 6.5W
Chipset	<ul style="list-style-type: none"> ■ Intel NM10 Express Chipset
Video	<ul style="list-style-type: none"> ■ Integrated HD Graphics, DirectX 9
Memory	<ul style="list-style-type: none"> ■ 1 x DDR3-800 SO-DIMM slot up to 2 GB (N2600 version) ■ 2 x DDR3-800/1066 SO-DIMM slot up to 4 GB (N2800 version)
Expansion Slots	<ul style="list-style-type: none"> ■ 1 * PCI Slot, 1 * PCI Express Mini Card Slot (full-size)
Storage	<ul style="list-style-type: none"> ■ 2 * SATA3 6Gb/s & 1 * SATA2 3Gb/s Ports, 1 * CFAST Socket
Audio	<ul style="list-style-type: none"> ■ Realtek ALC662 2 Channel Audio
Network	<ul style="list-style-type: none"> ■ 1 * Realtek RTL8111EVL PCI-E Gigabit LAN with Enhanced Surge Protection
LVDS	<ul style="list-style-type: none"> ■ 1 * 24-bit Dual Channel & 1 * 18-bit Single Channel LVDS & Inverter Headers
USB	<ul style="list-style-type: none"> ■ 7 * USB 2.0 Ports Total
Other Features	<ul style="list-style-type: none"> ■ Support ACPI S3, CPU Smart FAN, Watchdog Timer 1-255 min/sec
Rear Panel I/O	<ul style="list-style-type: none"> ■ 3 * USB 2.0 Ports ■ 1 * Serial Port (RS232) ■ 1 * RJ-45 Port ■ 1 * Audio Port (Line-out) ■ 1 * HDMI Port ■ 1 * 12V DC In
Internal I/O	<ul style="list-style-type: none"> ■ 2 * USB Headers for 4 * USB 2.0 Ports ■ 2 * Fan Headers, 1 * PS/2 KB/MS Header ■ 1 * 4-pin ATX Power Connector ■ 2 * LVDS & Inverter Headers, 1 * Chassis Intrusion Header, 1 * GPIO ■ 2 * Serial Header (RS232), 1 * Serial Header (RS232/422/485) ■ 1 * Parallel Header, 1 * Audio Header ■ Front Panel Headers
BIOS	<ul style="list-style-type: none"> ■ AMI 16MB DIP Flash ROM
Box Contents	<ul style="list-style-type: none"> ■ NF9C Motherboard, SATA Cables, Serial Cables, Internal Power Out Cable, Manual, DVD Driver Disk, I/O Shield
Compliance	<ul style="list-style-type: none"> ■ CE, FCC, RoHS, ErP
Temperature	<ul style="list-style-type: none"> ■ Operating Temp 0~60° C ■ Storage Temp -20-85° C
Form Factor	<ul style="list-style-type: none"> ■ Mini-ITX Form Factor (170mm x 170mm)
Warranty	<ul style="list-style-type: none"> ■ 2 Years Limited Warranty

*This board is designed to be installed in a chassis with at least one exhaust fan.

**Specifications subject to change without notice, not responsible for typographical errors.



www.ibtpanelpc.com

eMail: info@ibtpanelpc.com **iBT Technologies inc.**
 Toll Free: 1(866) 590-4288 Tel. (514) 832-0808 Fax. (514) 832-0128